



From mountain to sea

Rayne North School

Handbook 2022/23



Contents

Introduction to Rayne North	4
Our Vision, Values and School Ethos	6
Curriculum	8
Assessment and Reporting	12
Transitions (Moving On)	14
1 Admissions	15
2 Placing requests & School Zones	16
Support for Children and Young People	17
3 Getting it Right for Every Child	17
4 Wellbeing	17
5 Children's Rights	18
6 The Named Person	19
7 Educational Psychology	19
8 Enhanced Provision & Community Resource Hubs	20
9 Support for Learning	20
10 The Child's Plan	21
11 Child Protection	22
12 Further Information on Support for Children and Young People	23
Parent & Carer Involvement and Engagement	24
13 Parental Involvement and Engagement Strategy	24
14 Parental Engagement	24
15 Communication	24
16 ParentsPortal.scot	25
17 Learning at Home	25
18 Parent Forum and Parent Council	25
19 Parents and School Improvement	26
20 Volunteering in school	26
21 Collaborating with the Community	26
22 Addressing Concerns & Complaints	26
School Policies and Useful Information	28
23 Attendance	28
24 Holidays during term time.	30

25	Dress Code	30
26	Clothing Grants	31
27	Transport	31
28	Privilege Transport	31
29	Early Learning & Childcare Transport	32
30	Special Schools and Enhanced Provision	32
31	School Closure & Other Emergencies	33
32	Storm Addresses	34
33	Change of address and Parental Contact Details	34
34	Anti-bullying Guidance	34
35	School Meals	35
36	Healthcare & Medical	37
37	Schools and Childcare – Coronavirus	38
38	Exclusion	38
39	Educational Visits	39
40	Instrumental Tuition	39
41	Public Liability Insurance	39
42	School Off Site Excursion Insurance	40
43	Data we hold and what we do with it.	40
44	The information we collect from you	40
45	Your Data, Your Rights	41
46	Parental Access to Records	41
47	Information Sharing	42
48	ScotXed	42
Further Information		43

All information in this handbook is correct as of October 2022

Introduction to Rayne North

Welcome to Rayne North School. Rayne North School was opened in 1876 and at one time was a junior secondary. This has meant that we have had plenty of space in which the children and staff can work. At present we have three classrooms, a large hall and a general purpose/dining room. We also have a large playing field, an eco-garden and two tarred playground areas.

The school is situated approximately 8 miles north of Inverurie, in the Central area of Aberdeenshire. The main village in our catchment area is Meikle Wartle but other districts include Tocher, Kirkton of Rayne and Warthill.

Currently, we have three classes and a role of 60. Rayne North School has 4 teaching staff. The Head Teacher also teaches 2-3 days per week. Additional Teachers help with the delivery of P.E., Music and Science. We also have a support for learning teacher one half day per week.

The school also works closely with a range of other support agencies in order to provide the best possible experience for our children. The staff are supported by 2 pupil support assistants, 1 school administrator, 3 catering staff, 1 cleaner and a part time janitor.

On leaving primary school pupils transfer to Meldrum Academy. Rayne North is part of Meldrum Cluster and works closely with all 11 schools. Community links are a valued part of school life. The school is used for community activities and has a supportive Parent Forum and associated Parent Council.

Rayne North is a non-denominational school with a role of 60.

Devolved budgets are managed in accordance with authority guidelines in order to support planned improvements in the school.

School Contact Details

Head Teacher	Mrs Stephanie Stephen
School Name	Rayne North School
Address	Meikle Wartle, Inverurie AB515BY
Telephone Number	01464635195
Website	http://raynenorth.aberdeenshire.sch.uk/
School Email	raynenorth.sch@aberdeenshire.gov.uk
Parent Council Email	raynenorthparentcouncil@gmail.com
Social Media	Twitter @RayneNorth

Adverse weather and emergency closure

<https://online.aberdeenshire.gov.uk/Apps/schools-closures/>

Information Line 0370 054 4999 School Pin: 022490 (Please do not use this line to leave messages for the school.)

The school day

School Hours Start 9.00 am
Morning Break 10.30 am- 10. 50 am
Lunchtime Break 12.15 pm – 1.15 pm
School day ends 3.15 pm

Our staff team

Head Teacher – Mrs S Stephen
Class 1-P1/2- Teacher- Mrs Stephen/Mrs M Sorrie
Class 2-P3/4/5- Teacher-Mrs A Glen
Class 3-P5/6/7- Teacher- Mrs K Mitchell-Moore
Core Cover Teacher – Mrs H Brown
Pupil Support Assistants- Mrs Y Donald and Mr N Hudson
Administrator/Clerical- Mrs C Milne
SFL – Mrs E McIver
Catering Staff- Mrs C Moir, Mrs A Barrie, Mrs D Smith
Cleaner- Mrs D Smith School Janitor- Mr Stuart Sim Supervisory Janitor- Mrs Stacey
Porteous

Our Vision, Values and School Ethos



Rayne North Vision



At Rayne North, we all work together to be **R**esponsible, to **A**chieve in all areas, to care for **Y**ou and the community, to **N**urture each other and to always aim for **E**xcellence in a friendly and welcoming environment where Learning and Teaching is central.

We Value

Respect and Respecting Others

Positivity and Openness

Ambition and Achievement in all areas

Responsibility and Trustworthiness

Confidence and Feeling Safe

Inclusion and Our Community

Friendliness and Nurturing Others

Motivation and Active Involvement in Learning





We Aim To:

Ensure that all children respect each other and their rights and appreciate the diversity within their school, community, society and the world.

Have high expectations of all our pupils and to encourage them to strive for their ambitions, we will equip them with tools such as reflection and self-evaluation to help them succeed in the world of work and lifelong learning.

Have confident independent children who feel safe and healthy by building resilience to support children's self-esteem and self-belief.

Ensure everyone is friendly to each other and able to appreciate the feelings of others. A school where everyone nurtures each other's social development with the support of restorative approaches.

Encourage children to have a positive mind-set and be aware that progress can always be made.

Ensure children are responsible both in school and in the global community and are able to make informed choices.

Always ensure inclusion by working with the community and partners so children's experiences are equitable and there is understanding of fair not being everyone getting the same thing but everyone getting what they need to be successful.

Ensure children are active participants in their learning and the life of the school cultivating enquiring and open minds.

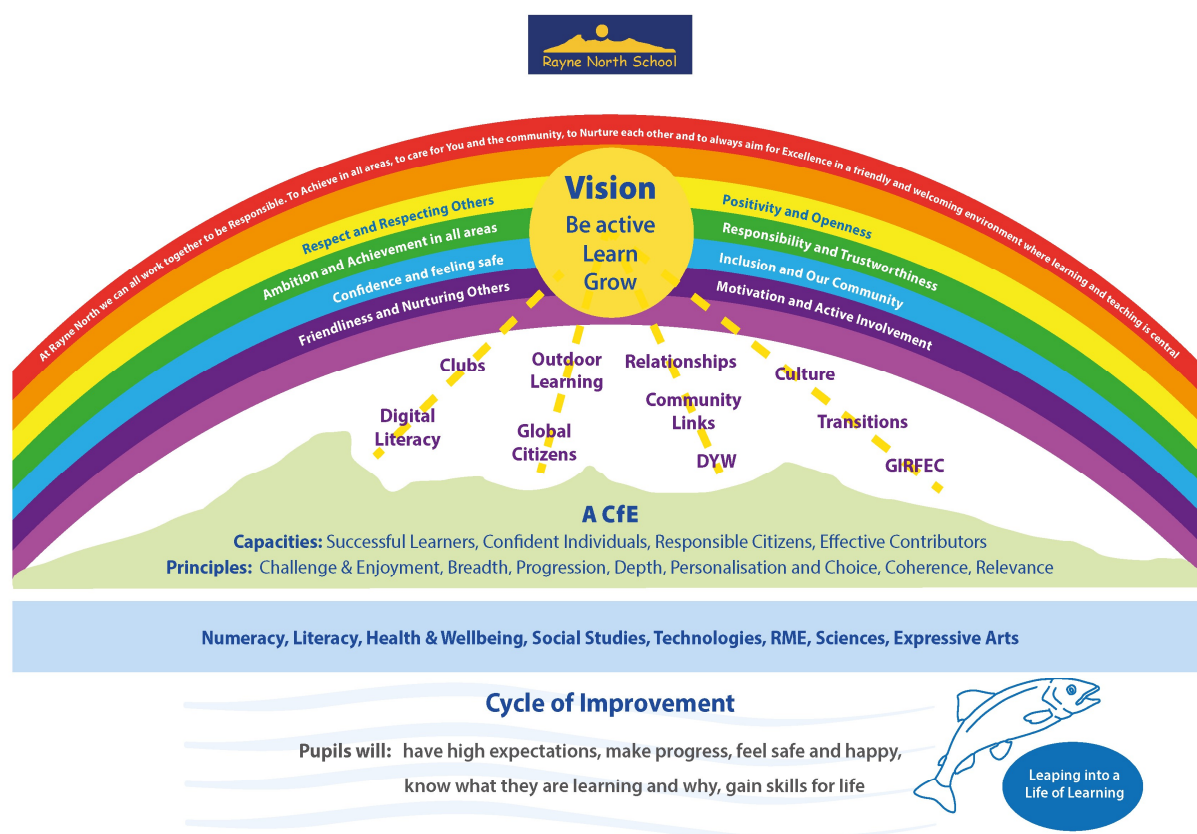


Curriculum

Within our school, we aim to provide a curriculum that is both inclusive and ambitious for all – a curriculum which is both academically challenging as well as providing opportunities to develop skills for learning, life and work.

Our curriculum will be based around the four capacities of Curriculum for Excellence – to ensure our pupils are successful learners, confident individuals, effective contributors, and responsible citizens. Our curriculum will also reflect the principles of curriculum design to ensure breadth, depth, personalisation & choice, challenge & enjoyment, progression, coherence, and relevance. We will therefore, have a curriculum which we will adapt continuously over time to meet the needs of our pupils.

Following the principles of Curriculum for Excellence, achievement of children and young people is celebrated in its broadest sense. This means looking beyond formally assessed learning, to recognise activities like volunteering and participation in arts, sports, and community-based programmes. This approach complements the nurturing and aspirational outcomes of Getting It Right for Every Child, and our aim in Aberdeenshire to overcome inequality by Raising Attainment for All, promoting Equity and Excellence in schools, and Closing the Gap. Further information on the school's approach to Curriculum for Excellence including information for parents, can be found on the school website at: <https://raynenorth.aberdeenshire.sch.uk/>



Curricular Areas

- **Literacy and English Language:** Listening, Talking Reading, and Writing.
- **Numeracy and Mathematics:** Number, Money and Measure, Information Handling, Shape, Position and Movement.
- **Health & Wellbeing:** Mental, emotional, social, and physical wellbeing, Physical education, activity and sport, Food and health, Substance misuse, Relationships, sexual health and parenthood.
- **Social Studies:** People, past events and societies, People, place and environment, People, society, economy, and business.
- **Sciences:** Planet Earth, Forces, electricity and waves, Biological Systems, Materials, Topical Sciences.
- **Technologies:** Technological developments in society, Business technology skills and knowledge, Computing science, Food and textiles, Craft, design, engineering, and graphics.
- **Expressive Arts:** Music, Drama, Art and Design and Dance.
- **Religious and Moral Education:** Christianity, World Religions, Development of beliefs and values.
- **Modern Languages:** French and Spanish

Curriculum Design

Our curriculum is designed based on the following 7 principles:

- Challenge and enjoyment
- Breadth
- Progression
- Depth
- Personalisation and choice
- Coherence
- Relevance

Developing Young Workforce

Developing the Young Workforce (DYW) is the Scottish Government's Youth Employment strategy to better prepare young people for the world of work.

Developing the Young Workforce is embedded in Scotland's Curriculum and along with the Curriculum for Excellence and Getting it Right for Every Child (GIRFEC) it is one the three main building blocks underpinning Scotland's education offer for children and young people.

The DYW Aberdeenshire priorities are as follows:

- Development of the **DYW Curriculum** offer including embedding the Career Education Standard Entitlements 3-18 and the further development of BGE pathways and Foundation Apprenticeships in the senior phase.
 - **Skills Development** – embedding skills for learning, life and work (**Metaskills**) and skills profiling
 - **Partnership** Development, including partnership with employers
-

- Support for **Equalities**

As part of the 3-18 curriculum, pupils will develop skills for learning, life, and work and Skills 4.0 and Metaskills. Throughout their time in school, from Early Years onwards, all pupils will have an opportunity to engage with employers, through experiences like workplace visits, career talks, employability events and courses, work experience and curriculum based activities. They will also have the opportunity to learn about further and higher education as well as different career pathways into employment.

In S4-6, pupils will be given the opportunity to study for vocational qualifications, including Foundation Apprenticeships, alongside the more traditional qualifications.

Further information for parents on Foundation Apprenticeships can be found [here](#)

Curricular Levels

Early	The pre-school years and P1, or later for some.
First	To the end of P4, but earlier or later for some.
Second	To the end of P7, but earlier or later for some.
Third and Fourth	S1 to S3, but earlier for some. The fourth level broadly equates to Scottish Credit and Qualifications Framework level 4. The fourth level experiences and outcomes are intended to provide possibilities for choice and young people's programmes will not include all the fourth level outcomes.

Development of Spiritual, Moral, Social and Cultural Values

In our school we are committed to providing appropriate opportunities for the development of pupils' spiritual, moral, social and cultural values through both the ethos and the curriculum.

Extra-Curricular Activities

At Rayne North school we try to offer extra-curricular opportunities when possible. This may take the form of pupil led playtime groups, staff led Lego and coding clubs or parent supported STEM experiences. These are all voluntary and we greatly appreciate any opportunities we can offer.

1+2 Language Learning

The Scottish Government policy 'Language Learning in Scotland: A 1+2 Approach' is now embedded in our curriculum. Children are growing up in a multilingual world and to allow them to take their place as global citizens, they need to be able to communicate in many settings. This approach entitles every child and young person to learn two languages at school in addition to their mother tongue language.

In our School the first foreign language will be French. This language will be learned from P1 (in Primary School) through to S3 (in secondary school).

If you would like your child to access Gaelic Medium Education and they have not yet started to attend a primary school you can make a request for an assessment of need for Gaelic Medium Primary Education (GMPE). For more information, please go to:

<http://aberdeenshire.gov.uk/schools/information/gaelic-in-schools/>

The parent or carer of any child or young person can make a request for their child to attend to any school which offers GMPE. This will enable your child to be taught by specialist staff. As there are currently no schools in Aberdeenshire which have GME provision learners are transported to school in Aberdeen City.

Further Information

More general information on Curriculum for Excellence and the new Qualifications can be found by clicking on the hyperlinks below.

Policy for Scottish Education:

<https://education.gov.scot/scottish-education-system/policy-for-scottish-education>

Early Learning & Childcare:

<https://www.education.gov.scot/scottish-education-system/Early%20learning%20and%20childcare>

Broad General Education (Pre school – S3):

<https://education.gov.scot/scottish-education-system/Broad%20general%20education>

Senior Phase and beyond (S4 – 16+):

<https://education.gov.scot/scottish-education-system/senior-phase-and-beyond>

National Qualifications:

<https://www.sqa.org.uk/sqa/58062.3806.html?pMenuID=5605>

Assessment and Reporting

Pupils move through the curriculum at their own pace. A wide range of assessment techniques are used in school depending on what is being assessed and the reason for the assessment e.g.

- Observation of what the pupils “say”, “write” and “do”.
- Homework
- Self and peer assessments
- Marking of class work and other individual/class assessments
- Ongoing tracking and monitoring procedures in school
- Scottish National Standardised Assessments (P1, P4, P7 and S3)

Progress will be evidenced using a variety of approaches that best reflect the learning that has taken place and will track the skills that your child or young person is developing.

Assessment is ongoing throughout the Broad General phase and is a continuous process which influences the goals set for your child. As part of assessment, each year children and young people in P1, P4, P7 and S3 will participate in the Scottish National Standardised Assessments (SNSA). These national assessments are completed online and provide teachers with immediate feedback on each child or young person’s progress in literacy and numeracy. Children and young people do not have to prepare or revise for the assessments, which take place as part of normal learning and teaching. The assessments do not have any pass/fail mark and the results are used to help teachers plan the next steps in learning for each child/young person. Further information on SNSA is available at

<https://www.gov.scot/publications/scottish-national-standardised-assessments-purpose-and-use/>

The results of children’s achievements are discussed with them regularly so that they are involved in taking responsibility for their own learning. This may take the form of oral discussion and/or written comment. In this way, it is hoped to assist the pupil identify what has been learned and the next steps to their learning. Children regularly set targets in their work.

Parents will be informed of progress:

- through pupil profiles/learning logs
- through parent consultation evenings and other meetings
- through curriculum/learning events/parent workshops
- by the annual school report
- Individual Education Plans and associated documents

Parents and carers are encouraged to contact the school at other times throughout the year to discuss their child’s progress.

Secondary schools: Assessment & Reporting in the Senior Phase (S4-S6)

In the Senior Phase pupils embark on the National Qualifications.

As pupils enter this phase, they are set an aspirational target grade for each subject they are studying. This forms the basis for learning conversations between staff and pupils to discuss progress and identify next steps. This is shared with parents/carers through TRACKING Reports.

Further Information on Assessment, Reporting & Profiling can be found on Parentzone:

<https://education.gov.scot/parentzone/learning-in-scotland/assessment-and-achievement>

Transitions (Moving On)

Visits of prospective Parents

Prospective parents can contact the School Office and request an appointment to come and visit the school/nursery and meet with the Head Teacher. During this visit you will get a tour of the school and have an opportunity to ask any questions and discuss any particular needs for your child(ren).

Nursery to Primary

Rayne North School has no Nursery provision therefore children transition into P1 from a variety of settings. Children may attend a local authority Nursery in a larger school, a partner provider setting, childminder or private nursery. New entrants to P1 are enrolled early in the calendar year for entry to school in August. This is for children who will be five on or before the school start date in August. Those whose fifth birthday is between the August start date each year and the end of February the following year may also be admitted. Details of the enrolment dates are advertised in the local press by Aberdeenshire Education & Children's Services Department.

As a result, our transition process starts with a visit to each child in their setting prior to enrolment at Rayne North School. Transition meetings on Numeracy and Literacy are delivered to families to support the transition process. Children engage with a six-week block of learning packs as an introduction to school. Visits to school coffee mornings, to join the class for a story, stay for lunch, attend sports day and a longer morning visit are arranged for children. This is followed up by a two-week induction into school in August and further meetings on the Curriculum for families.

Mid-Session Transition

Parents of children joining school classes in the middle of a school session will have agreed a start date following consultation with the Head Teacher. A visit to the school will usually take place. Any transfer information, including schoolwork, can be helpful in supporting your child's continued education. Records from other Aberdeenshire schools are automatically transferred internally but when the school is out with the Authority, the school will contact the child's previous school to obtain the records.

Primary to Secondary

Rayne North School is part of the Meldrum Community Schools Network with the majority of children zoned to attend Meldrum Academy.

An induction programme for P7 is in place to help ease the transition into S1. Children complete transition work in school. P7 pupils spend 3 days at Meldrum Academy towards the end of the summer term. As a small school we also have links with other small schools to build relationships through P6 and into S1. Further information is communicated to parents about the induction calendar for secondary transition | 13

school around February each year. Parents also have the opportunity to visit Meldrum Academy where information will be shared, and questions can be asked.

Liaison between Rayne North School and Meldrum Academy is very good. During the P7 year, pupils may have opportunities to join with P7 pupils from the other Meldrum Community Schools Network schools.

Information about our P7 pupils is shared with guidance staff at the academy to help support appropriate continuity of education. Meldrum Academy staff also visit our pupils in Rayne North School where information is shared, and questions can be asked.

Enhanced transition processes through bridging group are available if required.

Where parents opt to send their child to any other secondary school, (following placing requests) Rayne North School supports any alternative transition arrangements wherever possible. Placing request forms are available from the school.

Transitions Between Stages

For some children, the thought of moving onto their next class/teacher can also be an anxious time. Again, we have structures in place to support these transitions. Teachers share planning and work together on school improvement projects helping to ensure a commonality of expectations and approaches. Time is arranged for teachers to hand over information regarding the learning needs of the pupils transferring from class to class. Around June of each year “step up” time is also arranged where pupils can meet their next teacher and their classmates. Opportunities throughout the year for children to work on joint projects, e.g. enterprise challenges, paired reading, specialist activities, etc. help to ensure that the children have opportunities to work with other staff and pupils. If you have any particular concerns regarding transitions, please make an appointment to see the class teacher or head teacher.

Buddy System

When your child begins school with us at any stage our buddy programme will support those early days. For this your child will be given a nominated buddy to guide them through our school routines and building.

Visit Parentzone for more information about transitions:

<https://education.gov.scot/parentzone/my-child/transitions>

1 Admissions

Nursery Admissions.

Early in each calendar year, all parents/carers should complete an application form and submit this to the nursery of their choice. This can be your local school nursery or any other early learning and childcare setting within Aberdeenshire. The application form can be found here:

<http://aberdeenshire.gov.uk/schools/information/early-learning-and-childcare-information/>

Primary Admissions

New entrants to P1 are enrolled early in the calendar year for entry to school in August. This is for children who will be five on or before the school start date in August. Those that have their fifth birthday between the August start date each year and the end of February the following year, may also be admitted. Go to:

<http://aberdeenshire.gov.uk/schools/information/primary-school-registration/>

To view the school catchment area for your address, go to:

<https://aberdeenshire.gov.uk/schools/school-info/admissions/school-zones/>

2 Placing requests & School Zones

For all advice and information on placing requests and guidance on school catchment/zones go to:

<http://aberdeenshire.gov.uk/schools/information/choosing-a-school>

Your child would normally attend a school within the school catchment area (zone) close to where you live. However, you can request that your child attends a school in another zone (out of zone). Please follow the links for more info:

[Out Of Zone Placing Request Policy & Procedures](#)

Support for Children and Young People

3 Getting it Right for Every Child

Getting It Right for Every Child (GIRFEC) is the national policy approach in Scotland which aims to support the wellbeing of all children and young people, by offering the right help, at the right time, from the right people. Certain aspects of this policy have been placed in law by the Children and Young People (Scotland) Act 2014.

Aberdeenshire's schools play a key part in delivery of Aberdeenshire's Children's Services Plan.



Its vision is that:

'Our commitment to Aberdeenshire's children and young people, is to provide them with the right support, in the right place, at the right time.'

In helping them reach their individual potential and goals, we will work together to make Aberdeenshire the best place in Scotland to grow up'

You can find out more about our Children's Services Plan at:

<http://www.girfec-aberdeenshire.org/who-we-are/our-childrens-services-plan/>

4 Wellbeing

Wellbeing of children and young people sits at the heart of the *Getting it Right for Every Child* approach. Eight Wellbeing Indicators shown below, outline the aspirations for all Scotland's children and young people.

- Included
 - Safe
 - Healthy
 - Achieving
 - Nurtured
-

- Active
- Respected
- Responsible



The Getting It Right approach means services will work in partnership with children, young people and their parent/carer(s) and we want every child at our school to feel happy, safe and supported to fulfil their potential.

5 Children's Rights

The Children and Young People (Scotland) Act 2014 included new law to help make sure children's rights are promoted across Scotland. Children and young people's rights and participation are promoted in lots of different ways by schools in Aberdeenshire.

This means we:

- Raise awareness of Children's Rights, and how rights can be accessed
- Provide opportunities for children and young people to get involved in decision-making
- Make sure children and young people's views influence how we develop services
- Support children and young people to express their views (where needed)
- Listen to children and young people's views on what we do well, and what we could do differently

Aberdeenshire Council has endorsed a Children and Young People's Charter. You can find out more about Children's Rights and opportunities for participation at:

<http://www.girfec-aberdeenshire.org/home/children-and-young-people/>

6 The Named Person

Prevention and early-intervention are seen as key to the Getting It Right approach in achieving positive outcomes for children and young people. By providing support at an early stage, most difficulties can be prevented from escalating.

One way the Scottish Government has decided this should be taken forward, is by making a Named Person available to every child and young person in Scotland. From birth to prior to starting school, the Named Person Service is provided by your Health Visitor. The Education Service provides the Named Person Service for all children on entry to Primary One, until aged 18 (or beyond where a young person remains at secondary school). In Aberdeenshire the Named Person will be either the Primary Head Teacher or Deputy Head Teacher and in Secondary School, the Named Person will be that young person's allocated Principal Teacher of Guidance (with a few exceptional circumstances).

The purpose of the Named Person role is to make sure children, young people and parents have confidence that they can access help or support no matter where they live or what age the child is. Acting as a central point of contact, the Named Person can help children, young people or parents/carers get the support they need, if and when they need it.

The Named Person can help by:

- Providing advice, information, or support
- Helping a child, young person, or to access a service or support
- Discussing or raising a wellbeing concern about a child or young person.

There is no obligation for children and young people or parents to accept any offer of advice or support from the Named Person. Non-engagement with a Named Person is not in itself a cause for concern. The Named Person Services is currently delivered on a national policy basis.

For more information you can contact your child or young person's Named person directly, or go to:

<https://www.gov.scot/policies/girfec/named-person/>

The Named Person for your child/young person is: Mrs Stephanie Stephen

7 Educational Psychology

The Educational Psychology Service (EPS) provides a service across Aberdeenshire from pre-birth to 24 years old. We work with children, young people, families, educational staff, local authority colleagues and a wide range of other professionals

including health professions, social work, early years partner providers and post school training and education providers.

When there are concerns about a child or young person's learning or wellbeing, an Educational Psychologist can support others to problem solve their way through potentially difficult and complex situations. Consultation with people who know the child best forms the basis of Educational Psychology assessment. Its purpose is to explore and understand the concern and support people to come up with solutions that will work in that particular context.

A range of helpful resources are available for all parents on the Educational Psychology website:

<https://blogs.glowscotland.org.uk/as/aberdeenshireeps/parent-information/>

8 Enhanced Provision & Community Resource Hubs

Aberdeenshire Council is committed to supporting children and young children to be educated in local schools through providing the right support in the right place at the right time. By enhanced provision we mean that a local primary and secondary school has an enhanced level of resources, such as access to a sensory room and life skills area; and support for learning staff who have an enhanced level of expertise to meet a range of needs.

Further enhancement is available through the community resource hub, for a small minority of children with severe and complex needs, who regardless of chronological age are making very small steps in learning and are at the early levels of learning. The enhanced provision centres and community resource hubs can offer outreach support to mainstream schools, short term assessment placements, flexibility (e.g. blended places) and access to a variety of therapies.

For more information on all our resources and policies go to:

<http://asn-aberdeenshire.org/>

9 Support for Learning

At times in their lives all children may require support for learning for a range of reasons. Some children may need a lot of support all the way through school. Others may need only a small amount for a short time.

A child is said to have additional support needs if they need more, or different, support to what is normally provided in schools or pre-schools to children of the same age. Reasons for requiring support might include:

- Missing school because of an illness or long-term condition
 - Having a physical disability
 - Being a young carer
 - Communication difficulties
 - Being particularly able
 - Changing school a lot
 - Being looked after or in care
-

- Difficulty in controlling behaviour
- Having a difficult family situation
- Suffering a bereavement
- Being bullied

Each school cluster has an allocation of Teachers of Additional Support for Learning (ASL) who are employed to support pupils with additional support needs. They work across each cluster in primary and secondary. In partnership with school staff, parents and other professionals (if appropriate), they identify barriers to learning, assess children's needs and support learning and teaching through a relevant curriculum.

Pupil Support Assistants (PSAs) assist teachers in promoting achievement and raising the standards of pupil attainment. They provide general support in relation to the needs of the class and individuals' care, health and wellbeing and safety and to ensure a secure and safe environment.

10 The Child's Plan

The *Getting It Right* approach makes sure children and young people are provided with a range of support, which is proportionate and put in place to meet assessed need. This is reflected in Aberdeenshire's staged approach to assessment and planning for individual children and young people, shown below.

- Universal Services (Core Provision)
- Universal Services (Support Generally Available)
- Universal Services (Targeted Support)

Targeted and Specialist Services (Multi-Agency)



For a small minority of children or young people, there might be higher levels of wellbeing need or risk identified. These children may require a level of targeted support, which needs to be coordinated on a single or multi-agency basis through a Child's Plan.

Where a child or young person needs one or more targeted supports, the benefit of a Child's Plan will be discussed with them and their parents/carers. An assessment using the National Practice Model (My World Triangle/Resilience Matrix) would help

to identify any wellbeing needs (*Safe, Healthy, Active, Nurtured, Achieving, Resected, Responsible, Included*), and highlights strengths and pressures in the child's situation. Families are fully involved as key partners in these discussions.

The Child's Plan will outline what action will be taken by the child, their family and professionals, and detail how these supports aim to help improve the child or young person's Wellbeing and overcome any difficulties.

A Lead Professional will be identified to co-ordinate and manage any Child's Plan.

Information is available on the Aberdeenshire *Getting It Right for Every Child* Website:

<http://www.girfec-aberdeenshire.org/>

11 Child Protection

Child protection is the responsibility of all who work with children and families regardless of whether or not they come into direct contact with children. All workers must be fully informed of their responsibilities in respect of keeping children safe. All services working with children, young people and families are expected to identify and consider the wellbeing of children and to share concerns appropriately.

Equal Protection from Assault (Scotland) Act 2019.

This was introduced on 7 November 2020 and all who work with children have a crucial role in implementing the Act. Instances of reasonable chastisement are now classified as an offence of assault and will be shared with the police.

Within our School we have a designated member of staff appointed to be responsible for Child Protection matters. If there is the possibility that a child could be at risk, the school is required to follow the Child Protection Procedures laid out for Education.

This may mean that the child is referred to Social Work, the Police or the Children's Reporter. In our school the designated staff member is: Mrs Stephanie Stephen

Remember – if you suspect a child is at risk, do not rely on someone else to notice.

If you would like to speak to someone, seek help or pass on information or concerns:

You can speak to designated staff in our school

Social Work Monday to Friday during office hours contact your Children & Families local [Social Work Office](#)

Evenings & Weekends call the Out of Hours Service on 03456 08 12 06

Police Emergency 999, Non-Emergency 101

Signs of abuse can range from poor personal hygiene and hunger to unexplained injuries or self-harm.

If a young person tells you they are being abused:

- stay calm and listen to them
-

- never promise to keep it a secret – tell them you must let someone else know
- remind them that they are not to blame and are doing the right thing
- report it, but leave any investigation to child protection agencies

Protecting Aberdeenshire's children and young people is everyone's business, go to:

<http://www.girfec-aberdeenshire.org/child-protection/>

12 Further Information on Support for Children and Young People

The following websites may be useful:

Getting It Right for Every Child (GIRFEC)

<http://www.girfec-aberdeenshire.org/>

Aberdeenshire Council

<http://www.aberdeenshire.gov.uk/schools/additional-support-needs/>

Support for All

<https://www.education.gov.scot/scottish-education-system/Support%20for%20all>

Enquire – National Parent Information Service and Helpline

<http://enquire.org.uk/>

Parent & Carer Involvement and Engagement

The term “parents” refers to anyone with parental responsibilities and others who care for or look after children or young people.

Both globally and nationally it is recognised that parents are the single most important influence on their children’s development, learning and achievement. The involvement and engagement of parents in their children’s learning is recognised as a key element in raising attainment, through support, help and encouragement given at home and whilst at school.

13 Parental Involvement and Engagement Strategy

The Parental Involvement and Engagement Strategy demonstrates the commitment by Aberdeenshire Council to improve the quality and the extent of all parents’ involvement in their child’s learning and the important role they play in their child’s education.

The plan sets out a vision for parental involvement and engagement for the next three years and covers a journey that a child takes from pre-birth to age 18. It highlights the leadership of those who make the difference day in and day out.

<http://publications.aberdeenshire.gov.uk/dataset/parental-involvement-and-engagement-strategy-and-action-plan/resource/02c6596e-8cba-42c7-b28a-ee64086ea42>

14 Parental Engagement

Parental engagement is about parents’ and families’ interaction with their child’s learning. It can take place in the home, at school or in the community: where it takes place is not important. The important thing is the quality of the parent’s engagement with their child’s learning, the positive impact that it can have and the interaction and mutual development that can occur as a result of that interaction.

15 Communication

The school uses a range of approaches to share information about your child’s learning and progress. These include:

- Use of Groupcall to text and email
- School website
- Newsletters
- Curricular Newsletters
- School Events – Coffee Mornings, Assemblies, Shows
- Open Days/Curricular Events
- Homework Activities
- Twitter

The school newsletter highlights planned opportunities where we welcome you into school for events, and opportunities to talk about your child's progress, wellbeing, and behaviour.

16 ParentsPortal.scot

parentsportal.scot

In support of Aberdeenshire Council's ambition to offer more digital services to its residents, Aberdeenshire primary and secondary schools are rolling out a new national online service called **parentsportal.scot**. This is designed to replace the paper 'schoolbag run', giving a child's registered contacts access to a range of school-related online services, 24 hours a day, 7 days a week.

At the heart of the system, is a secure account through **mygov.scot**, which is referred to as 'My Account' or 'MyAberdeenshire' account. 'MyAberdeenshire' is already used to allow parents/carers to make online payments or receive notifications if a school closes unexpectedly. **Parentsportal.scot** and 'MyAberdeenshire'/mygov.scot will work together, making this a convenient one-stop-shop, to access all Aberdeenshire digital services.

Initially, **parentsportal.scot** will allow parents/carers to see basic information about your child(ren)'s school and twitter account as well as:-

- make a link to your child(ren)
- complete the annual data check process electronically (child's main contact only)
- update their own as well as your child(ren)'s details at any time
- to register and access for online school meal payments using one sign in (iPayImpact)

How do I sign up? - If you **already have a myAberdeenshire account** to pay for school meals through iPayImpact, you can sign up using the same sign in details at <https://parentsportal.scot/home/> You **do not need** to register or set up a new **mygov.scot** account.

If you do not have a myAberdeenshire/mygov.scot account or are looking for more information and videos on how to access to **parentsportal.scot**, please go to <https://www.aberdeenshire.gov.uk/schools/school-info/parents-portal/>

17 Learning at Home

Learning at home is the learning which happens in the home, outdoors or in the community. Your home is a great place to support learning. Your child can try out new activities or practice familiar learning, at home and in their wider community.

At our school we provide materials for you to work with your child to develop key skills at home. Explanation will be shared in homework information issued.

18 Parent Forum and Parent Council

The Parent Forum is a collective name for all parents, carers, and guardians in the school.

The Rayne North Parent Council is a group of parents selected by the Parent Forum to represent the views of all parents, carers, and guardians in the school. The Parent Council works with the school to support learning and teaching, school improvement and parental and community engagement.

Contact the Parent Council Chairperson Lisa Strachan or Head teacher for more information about getting involved in the Parent Council or email: raynenorthparentcouncil@gmail.com

19 Parents and School Improvement

Our school has a range of priorities that we work on each year which are explained in our School Improvement Plan (SIP). Parents often have helpful and creative ideas about how to improve their child's school and what can be done to improve the quality of children's learning. In our school we will consult with parents in a number of ways. These may include:

- working groups/focus groups which any interested parent is invited to be part of
- questionnaires and surveys
- consultation with the Parent Council

20 Volunteering in school

There are many opportunities for you to support learning in school. These may include:

- volunteering to share the skills and knowledge you have
- supporting children and young people in the classroom
- supporting or lead extra-curricular activities
- directly supporting with specific skills (paired reading for example)

More detail about this can be found using the link below:

<http://jobs.aberdeenshire.gov.uk/volunteer-with-us/> or contact your Head teacher.

21 Collaborating with the Community

We work with many local organisations, community groups and businesses to ensure our children and young people benefit from further resources, experiences, and opportunities. If you are interested in working with the school, please contact the Headteacher

22 Addressing Concerns & Complaints

Aberdeenshire Council recognises the vital role that parents play in supporting their child's learning and is committed to fostering positive relationships with parents. No matter how strong partnerships are, or how good our policies are, sometimes things can still go wrong and there may be occasions where parents wish to express unhappiness or dissatisfaction with council services, policies, or staff behaviour.

<http://aberdeenshire.gov.uk/contact-us/have-your-say/have-your-say-guide/>

When a complaint is made it must be handled in accordance with the Complaints Handling Procedure which provides two opportunities to resolve issues internally. In order to maintain positive relationships, it is usually better for all if parental concerns or complaints can be resolved at school/ early years setting level as quickly as possible.

If a concern or complaint cannot be resolved at frontline resolution (Stage 1) then it will progress to Investigation (Stage 2) and a detailed investigation into the matter will be carried out. Complaints that are complex, serious, or high risk and require detailed, lengthy investigation may be dealt with at the Investigation Stage from the outset.

Once the two internal stages of the Complaints Handling procedure have been exhausted, the complainant must be directed to the Scottish Public Services Ombudsman (SPSO) to carry out an independent external review of the process. The SPSO is the final stage of the complaint procedure.

Once the SPSO reaches a decision they may contact the council with recommendations for improvement and will provide dates by which the recommendations must be implemented. The council is required to report back to the SPSO and evidence that the required action has been taken.

School Policies and Useful Information

School Policies such as the Homework Policy; Promoting Positive Relationships; our Mobile Phone etc. are published on the school website and can be found by clicking the parents tab at the top. Please go to: <https://raynenorth.aberdeenshire.sch.uk/>.

All Aberdeenshire Council Education policies can be found here:

<http://www.aberdeenshire.gov.uk/council-and-democracy/about-us/service-structure/education-and-childrens-services-policy-framework/>

23 Attendance

The school follows the Aberdeenshire Attendance Policy:

<http://publications.aberdeenshire.gov.uk/dataset/council-policies-education/resource/4d0b8f53-24d8-4638-b084-17fe885d11d4>

Procedures for following up on pupil absence are based on the Education (Scotland) Act 1980 which requires by law that parents/carers ensure that children attend school regularly. The Home/School Liaison Officer has a key role to play, providing a vital link.

Unplanned Absence

It is important to note that if a child does not arrive at school and there is no reasonable explanation provided for his/her absence then members of staff will be required to ascertain the whereabouts for the safety of the individual child. This will involve a phone call to the parent soon after 9.00am. Repeated calls will be made until the child's whereabouts have been confirmed. Emergency contacts will also be contacted. If contact cannot be made the situation will be assessed and it may be thought necessary to take further action. In order to avoid causing unnecessary concern for staff and parents the importance of good communication between home and school cannot be over-emphasised.

Parents are asked to assist school staff in the manner detailed below:

- ☐ If your child is unable to attend school through illness/other reason please telephone or email the school between 8:30am and 9:30 am on the first day of his/her absence.
- ☐ If you intend to take your child home for lunch please inform the school by telephone or email in the morning and if your child becomes unwell at lunchtime making them unable to return to school in the afternoon please telephone the school before the beginning of the afternoon session to inform a member of staff.
- ☐ When you contact the school, it would be helpful if an indication could be given as to the reason for the absence and the child's expected length of absence from school.

Attendance and Communicable/Infectious Diseases

When pupils are off school because of sickness or diarrhoea, they should not be sent back to school until 48 hours after symptoms have passed. Pupils must be kept off school for a period of time where they have an infectious or contagious disease. These include common ailments such as impetigo, conjunctivitis, chicken pox etc. Please contact your GP or local health centre for up to date advice if you believe your child may have a communicable disease. For further information regarding how long children need

to be kept at home and not sent to school either contact the school office or go to www.nhsgrampian.org exclusion policies for infectious diseases.

Attendance and Head lice

Please check your child's head regularly (we recommend weekly) and notify the school if you find head lice. Current advice on the treatment of head lice is available from your local pharmacist. Once treated your child is able to attend school.

Planned Absences

As part of Government Regulations, we are required to record all absences as "authorised" or "unauthorised". Authorised absences are due to illness or family bereavement and can also include time off to attend, e.g. sporting events or music exams.

- ☐ Under normal circumstances we do not send work home in the case of absence.
- ☐ For medical or dental appointments, the school should be informed beforehand by email or phone call. Children should always be collected and returned by an adult on these occasions. As far as possible such appointments should take place out with the school day.

Arrival at School & Playground Information

Children should not arrive at school more than 20mins before the start of the school day. This is the earliest time we expect children to arrive at school. During inclement weather, your child should arrive at school just in time for the start of the school day at 9.00am.

School transport pupils, whose parents have no control of their children's arrival time, will be allowed into the building if the weather is excessively wet or windy. School transport will not drop off pupils more than 20mins before the start of the school day.

During morning and lunch breaks, a member of staff supervises children in the playground and playfield.

If your child has an accident in the playground, he/she will be treated by a first aider. Your child will be given a minor injury slip, which will inform you of the nature of the injury and the treatment given. We will attempt to notify you by telephone of any serious injuries. **(Please ensure that you keep the school updated of any change in your emergency contact details/new mobile phone number.)**

During lunch/break times children will be expected to play outside unless the weather is excessively wet or windy. Children should be sent to school with appropriate outerwear to suit the time of year.

At the end of the school day, pupils who do not go home on school transport should be collected at the school gate. Please ensure your child knows who he/she is going home with if you are unable to collect your child.

For health & safety reasons, dogs are not permitted in the school grounds.

School Office

The school office is manned from 9.00am – 3.15 pm on Thursdays and Fridays and from 9.00am – 1.15 pm on Mondays, Tuesdays and Wednesdays.

The school phone line is 01464 635195 and can take electronic messages which will be sent to the school email account. All messages are where possible collected by 9.00am each morning.

Door Security

All schools in Scotland have security doors fitted as standard. This is to ensure the safety of children and staff at work during the school day. Those accessing school premises **MUST** only do so through the security door system and you are reminded that this should be the only access you use when visiting the school. In line with Aberdeenshire Council's Health & Safety Policy, all visitors to school will be asked to sign in and wear a visitor's pass badge.

Doors open easily from inside the building to allow for easy exit in an emergency.

24 Holidays during term time.

The Scottish Government has deemed that holidays taken during term time for primary and secondary children should be recorded as unauthorised absence unless there are special, exceptional circumstances. Should you wish to remove your child from school to attend a family holiday you must inform the Head Teacher. This will be recorded as unauthorised absence though there may at times be exceptional family circumstances previously discussed with the Head Teacher. Parents are advised to limit the number of holidays taken during term time, to minimise disruption to a child's education. For annual holiday dates for Aberdeenshire schools please see the section at the back of this book, contact the school office or go to:

<http://www.aberdeenshire.gov.uk/schools/parents-carers/school-term-dates-and-in-service-days/>

25 Dress Code

We encourage all pupils to wear school uniform. This helps to instil a sense of pride and team spirit within our school. Uniform orders are available from Buchan Embroiderers website <http://www.buchanembroidery.com>

We can also provide 'nearly new/recycled' sweatshirts for parents who would wish to make use of these. School uniform consists of - school sweatshirt with school logo, white or yellow polo shirt, dark school skirt or trousers, dark school shoes. We appreciate your cooperation in support of this. Please consider the changeable nature of weather conditions and provide your child with appropriate outerwear and footwear to suit.

PE Kit consists of – T shirt which tucks into shorts, standard length shorts, socks, gym shoes (preferably with Velcro or elastic fastening for younger pupils) all kept in a gym bag.

With regard to safety, the wearing of jewellery is not permitted during PE lessons. If your child (boy or girl) has pierced ears, please ensure they can remove and replace earrings by themselves. Any child wearing earrings that cannot do this will be asked to put surgical tape over them for PE lessons.

All clothing brought to school should be named or marked in some way, as it is difficult for children to distinguish their own clothing from that of others.

Pupil Belongings & Valuables

In the cloakroom area the children have a space for hanging up their coats and gym bags and for storing packed lunch boxes. Each child will also have their own named tray for storing their belongings in class.

Valuables

The wearing of jewellery is discouraged in the school as it can get lost or add to injuries. The wearing of a watch is acceptable. Children who have pierced ears and need to wear earrings must wear studs as opposed to hoops or dangly earrings.

Children should not bring electronic games, mobile phones or other expensive items into school. Should parent's request that their child be allowed to take a mobile phone into school for use after school, the pupil will hand it in to the office first thing in the morning and collect it at the end of the day.

School Equipment

The school provides all of the books and equipment that your child will need to use in school, however many children like to bring their own pencil case and equipment. We would suggest the following pencil case contents – HB pencil(s), a ruler – marked in centimetres, a rubber and some colouring pencils. Children will also require a school bag and a book bag to carry their belongings and equipment to and from school.

26 Clothing Grants

Some families may be entitled to a school clothing grant per eligible child per financial year. More information about this can be found at:

<http://www.aberdeenshire.gov.uk/schools/parents-carers/assistance/school-clothing-grants/>

27 Transport

To qualify for free Home-to-School Transport, Primary school pupils must reside more than 2 miles from and attend their zoned school whilst Secondary school pupils must reside more than 3 miles from and attend their zoned school.

These distances are the shortest available route from the pupil's house to the school gate and can take into account main roads (including dual carriageways), tracks and paths. Pupils will be assigned a collection point, in villages and towns and where safe to do so, pupils may have to walk up to 1 mile to the nearest collection point. Pupils who reside in rural locations are usually collected at the nearest adopted road to them (track end or roadside). School transport vehicles will not use private unadopted roads or tracks. It is the parent's responsibility to escort the pupil to and from their collection point. Application forms for free transport, Form PTU100 can be obtained from the school office.

28 Privilege Transport

Transport provision is also made available for pupils who are not ordinarily entitled to transport. Privilege transport is provided on school transport services subject to spare seating capacity. There are 3 types of privileged transport available.

In-zone Privileged transport

Pupils who attend their zoned school but are under the qualifying mileage can apply for In-zone privilege transport. If there is suitable seating capacity available and an existing route then the application should be approved, if there is not and there is a

safe walking route available to the pupil, then it may be rejected. Please also note that if seating capacity is needed for a pupil who is entitled to school transport, In-zone Privilege pupils may be give written notice and removed from transport.

In-Zone Privilege Transport – Safety

Pupils who attend their zoned school but do not qualify due to their residence being under the qualifying mileage can apply for In-zone privilege transport. If there is no safe walking route available to the pupil, they are guaranteed a seat on transport by applying for an In-zone Privilege pass. A pupil who is guaranteed in-zone privilege transport would not be removed to make room for a pupil who is entitled to school transport.

Out of Zone Privilege Transport

There is no transport entitlement to pupils who attend a school which they are not zoned for. Pupils may apply for Out of Zone Privilege transport; pupils are required to meet the nearest available school transport vehicle to them, and it is the parent's responsibility to bring the pupil to the nearest collection point. Out of Zone Privilege transport pupils may be removed, with written notice, at any time for In-Zone Privilege and Entitled transport pupils.

Application forms can be obtained directly from your child's school. For further information, see the Council website:

<https://www.aberdeenshire.gov.uk/roads-and-travel/school-transport/school-transport/> or contact: school.transport@aberdeenshire.gov.uk

Local Bus/Registered School Bus Services

Some services operate as registered bus services. These operate on a fare paying basis and pupils will be required to pay fare to the driver or purchase a season ticket for travel.

29 Early Learning & Childcare Transport

Transport to early learning and childcare settings will not be provided by Aberdeenshire Council, unless there are relevant exceptional circumstances. Where there are significant additional support needs, transport may be provided. In such instances this requirement should be discussed with the Head Teacher in conjunction with the Early Years Quality Improvement Manager.

30 Special Schools and Enhanced Provision

Aberdeenshire Council may provide free transport where necessary for pupils with additional support needs who access enhanced provision or community resource hub level support. In certain cases, it will be appropriate for pupils to make their own way to school by public transport and where this is authorised, bus passes are issued. Where a pupil's address falls in the delineated area of a resourced school, and is within reasonable walking distance, the Local Authority will consult with the

Community Child Health Service before deciding if free transport should be provided.

31 School Closure & Other Emergencies

Head Teachers decide if and when schools should close due to bad weather or another emergency. In bad weather they will decide this after receiving information about local weather conditions. This decision can be made during any time, day or night. These guidelines outline the procedures for dealing with school closures during bad weather or other emergencies.

If children are at school...

School transport contractors have been told not to allow children to walk home alone from drop-off points under any circumstances during extreme weather conditions. If you can't meet or arrange for your child to be met, the school transport will return them to a designated location.

Public service vehicles – drivers of these vehicles follow a specified route and keep to timetables – they cannot make special arrangements.

If your child attends a Nursery, Primary or Special School, which is to close early, the school will contact you by telephone. If this is not possible the school will contact your named 'emergency contact'. No child will be released from school without contact being made. It is important contact details are current and the people named are available – particularly during bad weather.

If your child attends a Secondary School, because of the large number of pupils in Secondary Schools, parents will be contacted via text/email to inform them of closure.

If you are concerned about local weather condition contact the school. You may wish to collect your child yourself and are free to do so provided you make arrangements with the school.

Before the start of the school day...

During bad weather some staff may not be able to get to school or bus routes may not be safe to travel on – so the school may have to close. Headteachers will advise parents and carers using the following communication tools:

Outwith school hours, your local radio station is a good place to find out information on school closures. The following radio stations receive updated information every 30 mins from our website:

- **Northsound 1**
FM 96.9
 - **Northsound 2**
MW 1035 kHz
 - **BBC Radio Scotland**
FM 92.4 - 94.7MW 810 kHz
 - **Moray Firth Radio**
FM 97.4 MW 1107 kHz
 - **Waves Radio**
FM 101.2
 - **Original 106 FM**
-

Twitter

<http://twitter.com/aberdeenshire>

Aberdeenshire Council Website

<https://online.aberdeenshire.gov.uk/Apps/schools-closures/>

You also have the option to sign up to receive email alerts when your school(s) updates their closure status:

<https://online.aberdeenshire.gov.uk/myAberdeenshire/>

School Information Line

Tel: 0370 054 4999 then **022498**. If you cannot get through first time, please do not put this number on redial. This will only lead to the line being busier.

32 Storm Addresses

When there has been severe snowstorm during the day it may be prudent for pupils who live some distance from the normal bus routes not to attempt to reach their homes but to spend the night in alternative accommodation nearer school. It is the parent's responsibility to inform school about any pupils who may be at risk in such situations and to provide the name and address of a relative or friend who is willing to provide overnight accommodation.

33 Change of address and Parental Contact Details

To enable us to make easy contact with parents, the school would appreciate if any changes of address, telephone number or circumstances is amended via your parentsportal.scot account (see Menu section 'Your Account') or notified in writing to the School Office. It is also important that the school has details of an Emergency Contact should it prove impossible to get in touch with parents in the event of an emergency.

34 Anti-bullying Guidance

What is Bullying?

Aberdeenshire Council Education and Children's Services define bullying as the following:

Bullying takes place when the actions of an individual or group of people cause harm to someone by taking advantage of an imbalance of power within a relationship (whether perceived or real). Bullying behaviour can be persistent and/or intentional, but often it is neither.

Bullying can be verbal, physical, mental/emotional, or cyber and is behaviour and impact. It can be intentional or unintentional, direct or indirect, persistent, or a one-off incident. The impact is on a person's ability to feel in control of themselves.

Bullying can be verbal, physical, emotional, or cyber. It can be intentional or unintentional, direct or indirect, persistent, or a one-off incident. People who experience bullying behaviour feel vulnerable and/or socially isolated.

What will the school do about it?

Schools should promote consistency of response to instances of bullying behaviour using a 6-step approach. They will:

1. Record the Incident
2. Speak to the individuals involved having frank and honest dialogue
3. Speak to parents
4. Utilise Restorative approaches
5. Monitor the situation
6. Review and increase response accordingly

More information can be found in our School's anti-bullying guidance at

<http://publications.aberdeenshire.gov.uk/dataset/b9bb8c35-50b7-401e-a7e3-30833f69cc73/resource/8d5ff96d-775f-4516-9f6b-c15ce425f407/download/cusersspellascdocumentsecs-002-anti-bullying-policy-2018.pdf>

35 School Meals**Primary School Lunches**

Lunch time is an important aspect of the school day. Not only does it provide children with a nutritionally balanced meal, it enhances their social and personal development.

How does my child choose their lunch?

In class first thing in the morning children select their meal using the Smart Board. Meal options are displayed, and a choice is made by touching the chosen option shown on the Smart board. The teacher will explain to children the menu options available on the day, but it is helpful for parents of the younger children to discuss this with them before they arrive in school.

The School Catering Service provides good value meals at our schools using carefully sourced quality ingredients. There is always a wide selection of options available from the menu. The menu and helpful information can be found via this link <https://www.aberdeenshire.gov.uk/schools/school-info/meals/primary-school-meals/>

Children with medically prescribed dietary requirements

Parents should be aware that they can access special dietary support information by viewing <https://www.aberdeenshire.gov.uk/schools/school-info/meals/primary-school-meals/> to access OurShireMenus content portal.

Children who require medically prescribed dietary support, with parental/guardian assistance, should be identified during the admission process. Procedures are set in motion to offer support for these children by completing Admission Form D available

from the school administration office. The School Management Team and the Catering staff will be happy to discuss your requirements. In the meantime if you require dietary information, please email medicallyprescribeddietarysupport@aberdeenshire.gov.uk.

Special Events and Celebrations

The children enjoy eating together and we encourage learning and wellbeing during lunchtime. Occasionally we celebrate special dates and encourage all children to participate.

If your child is going along on a school trip the school catering service can provide a nutritious packed lunch for the occasion and this includes children who qualify for free school meals.

How Much does a Primary School Meal Cost?

The current price of a Primary school meal can be found via the following link - <https://www.aberdeenshire.gov.uk/schools/school-info/meals/primary-school-meals/>

How do I pay for School lunches?

Lunches are provided free of charge for pupils from P1 to P5.

Paying for School lunches for is very easy to do online.

It is very important to keep this account in credit as failure to do so triggers a time-consuming debt recovery process for the School and Catering service. We aim to support the wider Authority to be debt free and require your support in this by ensuring you top-up your account before sending a child for school meals.

Online payments system

We are encouraging parents/carers to register for online school payments due to COVID-19 to eliminate handling of cash. Parentsportal.scot is the recommended way to register to access all school payments including school meals.

Parentsportal.scot is securely linked to a myAberdeenshire account and to register follow this link <https://www.aberdeenshire.gov.uk/schools/school-info/parents-portal/>

If you are having difficulty making payments, please contact the school office as we are here to support families and will do whatever we can to assist you.

Free School Meals Information

Am I entitled to free school meals?

Click on the link to find information that explains the free school entitlement and how to go about it. [Free School Meals](#)

If you have difficulties obtaining access to free school meals, please speak with your school and we will work together to provide assistance.

If you require any further information regarding School Catering send a message to this email address - schoolmeals@aberdeenshire.gov.uk

36 Healthcare & Medical

Every child's health and welfare is very important to the school. Parents who have any concerns should let school know by telephoning or writing in. Alternatively, parents can inform the Health Visitor or their own GP. Parents are requested to let the school know of any hospital appointments.

Parents/carers are requested to keep children at home for 24-48 hours if the child has diarrhoea, flu-like symptoms or is clearly unwell.

Always seeks a GP's advice before sending a child back to school. Please remember that other children can be vulnerable to infection.

The school is fortunate to have a nurse in attendance to undertake Health Interviews and provide advice on health matters for pupils. The school doctor will play a vital role in monitoring a child's health and well-being.

Although our medical staff provide help and advice as appropriate, all pupils must be registered with a doctor in general practice who should be consulted about health matters as they arise. Parents should provide us with the name and telephone number of their child's doctor and an up-to-date emergency contact for themselves in case it becomes necessary for a child to be sent home during school hours because of illness.

Aberdeenshire Community Dental Service inspect P1 and P7 children in schools as part of the National Dental Inspection Programme. Written parental consent is not required for dental inspections, but parents will be informed in writing approximately one week before the inspection date.

Most pupils will at some time have a medical condition that may affect their participation in school activities. For many this will be short term, perhaps finishing a course of medication to combat an infection.

Other pupils have medical conditions that, if not properly managed, could limit their access to education. Such pupils are regarded as having health care needs. Most children with health care needs can attend school regularly and, with some support from the school can access most school activities. However, school staff may need to take extra care in supervising some activities to ensure that pupils are not put at risk.

Planning formats may include either:

- Individual Pupil Protocol (IPP) (Med form 7).
- Health Care Plan written by Health professionals for very specific medical needs.

A risk assessment should also be completed.

The above can help schools to identify the necessary safety measures to support pupils with medical needs and ensure that they and others are not put at risk.

Please find the link below to our policy and guidance: Supporting Children and Young People with Healthcare needs and managing medicines in Educational Establishments

<https://asn-aberdeenshire.org/policies-and-guidance/>

Sunscreen - As children are outdoors for learning and for play, parents should apply this prior to sending children to school or nursery. School staff do not supply, nor do they apply, sunscreen creams.

If your child has long term medical conditions such as asthma or diabetes, which may require on-going support, this should be fully discussed with the school. In certain cases specific training of staff about a child's treatment may need to be given. In addition, some children have conditions which may require occasional staff intervention e.g. severe allergic conditions such as anaphylaxis.

37 Schools and Childcare – Coronavirus

Information for parents, carers, and young people on return to school arrangements in Aberdeenshire schools and early learning facilities.

- [New term arrangements](#)
- [Contingency planning](#)
- [School meals](#)
- [School transport](#)
- [Family Information Service](#)
- [Shine a Light on Lockdown](#)

If you are a British Sign Language (BSL) user, please watch our video explaining out schools and childcare arrangements. You can also contact us via [contactSCOTLAND-BSL](#), an online British Sign Language interpreting service.

38 Exclusion

The foundation for schools, learning establishments and education authorities is a whole school ethos of prevention, early intervention and support against a background which promotes positive relationships, learning and behaviour. Where pupils who display behaviour, whereby attendance at the school would be likely to be seriously detrimental to order and discipline in the school or the educational well-being of the pupils there, and where other forms of support have proved unsuccessful, the Authority exclusion policy may apply. For further information on exclusions contact the school or go to:

<http://publications.aberdeenshire.gov.uk/dataset/council-policies-education/resource/9e393d1a-2113-44c8-afb6-a517f2d495b6>

39 Educational Visits

We offer various educational visits during the school year. We believe that ‘hands on’ experiences greatly enhance a child’s education, while also helping to make the necessary links between learning in school and life outwith school. Staff members and parent volunteers provide supervision to standards laid down by Aberdeenshire Education & Children’s Services. We give parents as much notification as possible regarding visits their children will participate in.

There are grants available through the Aberdeenshire Educational Trust to help with the cost of school trips. For further information go to:

<https://www.aberdeenshire.gov.uk/benefits-and-grants/educational-grants/>

40 Instrumental Tuition

From Primary 4 onwards, tuition is available for a range of musical instruments. Most disciplines are taught in the secondary schools however not all disciplines are available in primary schools due to limited resources. Orchestral string instruments are not normally available to beginners at secondary level. Tuition is subject to availability.

100 days commitment: ending charges for instrumental music tuition in schools

A commitment made in the SNP’s ‘First Steps’ document and reaffirmed by the First Minister in Parliament on 26 May, was to abolish fees for instrumental music tuition in schools within the new Government’s first 100 days. Ministers and COSLA Leaders have agreed to the initial one-year removal of fees

For further information go to:

<http://aberdeenshire.gov.uk/schools/ims/>

41 Public Liability Insurance

Aberdeenshire Council holds third party liability insurance, which indemnifies the Council against claims from third parties, e.g. parents on behalf of pupils who have suffered injury, illness, loss or damage arising from the negligence of the Council or its employees. In these circumstances all claims are handled on behalf of the Council by external Insurers and Claims Handling Agents and compensation is dealt with on a strict legal liability basis. This means that there is no automatic compensation, the Council must be found negligent in order for any compensation to be offered by our Insurers and / or Claims Handling Agents.

Whilst the school will exercise reasonable care for pupils’ property, it is inevitable that property will be lost or damaged from time to time. Pupils’ property which is worn or brought to school or left in bags/cloakrooms is at their own risk. This includes but is not restricted to personal items such as jewellery, phones/tablets watches and bicycles. Aberdeenshire Council cannot accept responsibility for loss or damage unless caused by negligence of the school or staff.

42 School Off Site Excursion Insurance

Aberdeenshire Council has in place a School Excursion Insurance policy, whereby both pupils and teachers are covered for offsite activities / trips both within the UK and abroad (offsite meaning off the school premises). The policy covers medical expenses, loss of baggage, cancellation (as specified in the policy) , curtailment and change of itinerary (along with other sundry benefits) etc. for worldwide trips and adventurous activities (including winter sports), subject to policy terms and conditions being met.

If personal items such as jewellery, phones/tablets, watches etc. are taken on a school trip then these are taken at an individual's own risk and are not covered under the policy, unless damage or loss is caused by an Aberdeenshire Council employee.

Personal / individual cover is seen as a parental responsibility and it is your decision as to whether you feel it is appropriate to obtain this.

Where trips are booked and have subsequently to be cancelled because of any Covid related event then insurance will not be valid. This will of course be reviewed periodically.

Please be advised, however, that the Duty of Care aspect below is not insurance related:

Duty of Care

The Authority has a duty of care in respect of pupils in its charge during school hours and as such must take reasonable steps to ensure the safety of all primary and secondary pupils. This general duty of care continues if the children go home by way of school transport and ends when the child gets off the bus, at which point the parents then become responsible.

43 Data we hold and what we do with it.

The UK's Data Protection Act (DPA) 2018 enacted the EU GDPR's requirements into UK law and, with effect from 1 January 2021, [the DPPEC \(Data Protection, Privacy and Electronic Communications \(Amendments etc\) \(EU Exit\)\) Regulations 2019](#) amended the DPA 2018 and merged it with the requirements of the EU GDPR to form a new, UK-specific data protection regime that works in a UK context after Brexit as part of the DPA 2018 and is known as the 'UK GDPR'.

Aberdeenshire Council is committed to full compliance with these regulations. When you are asked for information by Education & Children's Services, we will tell you why we are collecting the information, how long we will hold it and the legal basis for gathering this information. A Privacy Notice has been issued to all schools relating to the information we hold on yourself and your child/ward.

44 The information we collect from you

Aberdeenshire Council collects personal data and information about your child in order to provide your child with a school education.

We will normally only share information (other than in child protection situations) in order to provide services for your child as part of his/her school education. We collect special category data about your child and process this because it is in the substantial public interest.

The information held by Aberdeenshire Council is used to assess, plan, coordinate, deliver, and quality assure the education services to your child. The Council does not use an automated process for making decisions about your child or the services required; decisions are made with you. We will keep this information for a period of 5 years from the maximum school leaving age of your child, as required to by The Pupils' Educational Records (Scotland) Regulations 2003, unless we have a legal responsibility to keep the information for a longer period of time.

45 Your Data, Your Rights

You have legal rights about the way the Council handles and uses your data. More information about all of the rights you have is available on our website at: <https://www.aberdeenshire.gov.uk/online/legal-notices/data-protection/>

Alternatively you can contact the Council's Data Protection Officer by emailing DataProtection@aberdeenshire.gov.uk or in writing to: The Data Protection Officer, Town House, 34 Low Street, Banff, AB45 1AY.

You also have the right to make a complaint to the Information Commissioner's Office, (www.ico.org.uk). They are the body responsible for making sure organisations like the Council handle your data lawfully.

The Council is required, where it is the data controller, to act in a transparent manner by providing information to individuals about how it will collect and use their personal data. Privacy Notices are an essential part of complying with this requirement. The Privacy Notice must provide information to individuals in a concise, transparent, intelligible, and easily accessible way and must be written in clear and plain language. All Education & Children's Services Privacy notices are available on our website at: <http://publications.aberdeenshire.gov.uk/dataset/education-privacy-notices>.

46 Parental Access to Records

Access Requests are the formal process by which individuals can seek information held about them (or their children) by the council. The requests can be broad, in terms of everything that is held, or quite specific - everything held by a specific department, establishment, team or individual. We have a legal requirement to provide the information under the Data Protection Act 2018. An Access Request is wider than an Educational Record in that it will include all personal data held about a child not just their educational record. Further information can be found at:

<https://ico.org.uk/your-data-matters/>

The Pupils' Educational Records (Scotland) Regulations 2003 means that you can get access to your child's records. Details of the regulations and process for obtaining information specific to pupils are available by contacting the school directly or can be found at:

<https://education.gov.scot/parentzone/my-school/general-school-information/My%20child's%20record>

47 Information Sharing

In terms of effective communication, including sharing relevant and proportionate information, where appropriate, Aberdeenshire Council in accordance with the Data Protection Act 2018 and Human Rights Act 1998 adheres to this as part of our current routine practice.

48 ScotXed

ScotXed is a term used to represent the Scottish Government's Education Analytical Services, which is part of the Scottish Government's Learning Directorate.

ScotXed have legal powers to request data with regards all children and young people being educated in Scotland's schools, with the information collected about pupils and staff in schools used to help to improve education across Scotland. They do not collect the names of your child/children and they do not receive any contact details the school may have for you (e.g. telephone number, email address), and no information is published or made publicly available that would allow your child/children to be identified. More information on what and why they need data about your child/children, along with how they collect and store it is available in their Education Statistics Privacy Notices for parents and carers:

<https://www2.gov.scot/Topics/Statistics/ScotXed/SchoolEducation/ESPrivacyNotices>

If you have any concerns around the national ScotXed data collections, you can:

- Contact the Data Protection & Information Assets team at the Scottish Government on dpa@gov.scot, or
 - The Head of Education Analytical Services, Mick Wilson, on at mick.wilson@gov.scot,
 - You can write to them at Education Analytical Services, Area 2A-North, Victoria Quay, Leith, EH6 6QQ.
 - Alternatively, complaints may be raised with the Information Commissioners Office at casework@ico.org.uk.
-

Further Information

The links below take you to the most up to date information on these topics.

School Improvement Plan

See School Website

Members of Parental Groups

Rayne North School

Parent Council

CHAIR -LISA STRACHAN

VICE CHAIR – GEMMA WILLIAMSON

SECRETARY- GAIL IRVINE

TREASURER- SUSAN HUGHES

MINUTES SECRETARY- MELANIE FLETCHER

FUNDRAISING – PAULA CORSAR

Stats for Attainment

The Scottish Government have developed a “School information dashboard” that provides a range of statistical information about each publicly funded school in Scotland. This includes school attainment information about Curriculum for Excellence Levels Achieved (for primary and secondary schools)

The dashboards can be consulted [here](#)

School Events Calendar & holidays

2021/22 school term

Term 1

- 22nd August 2022 - in-service day
- 23rd August 2022 - start of term 1
- 14th October 2022 - end of term 1
- 17th to 28th October 2022 - October holiday

Term 2

- 31st October 2022 - start of term 2
 - 17th November 2022 to 18th November 2022 - in-service days
 - 23rd December 2022 - end of term 2
 - 26th December 2022 to 6th January 2023 - Christmas holiday
-

Term 3

- 9th January 2023 - start of term 3
- 10th February 2023- Occasional Day
- 13th February 2023 - mid-term holiday
- 14th February 2023 to 15th February 2023 - in-service days
- 31st March 2023 - end of term 3
- 3rd to 14th April 2023 - spring holiday

Term 4

- 17th April 2023 - start of term 4
- 1st May 2023 – May Day Holiday
- 2nd June 2023- Occasional Day
- 5th June 2023 – Local Holiday
- 7th July 2023 - end of term 4
- 10th July to 18th August 2023 - summer holiday

Aberdeenshire Council School Holiday Calendar

<https://www.aberdeenshire.gov.uk/schools/school-info/school-term-dates/>

Map of catchment area

<https://gis.aberdeenshire.gov.uk/maps/map.aspx?geolocate=true&resolution=2&initialDialog=localKnowledgeDialog>

